

PARKS, TRAILS AND OPEN SPACE

The inclusion of extensive parks, trails and open space are central in developing the Amber Fields Master Plan. The primary green corridor is envisioned as a multifaceted amenity providing for the immediate community and greater regional area. Details for specific designs and concepts are given in this section.

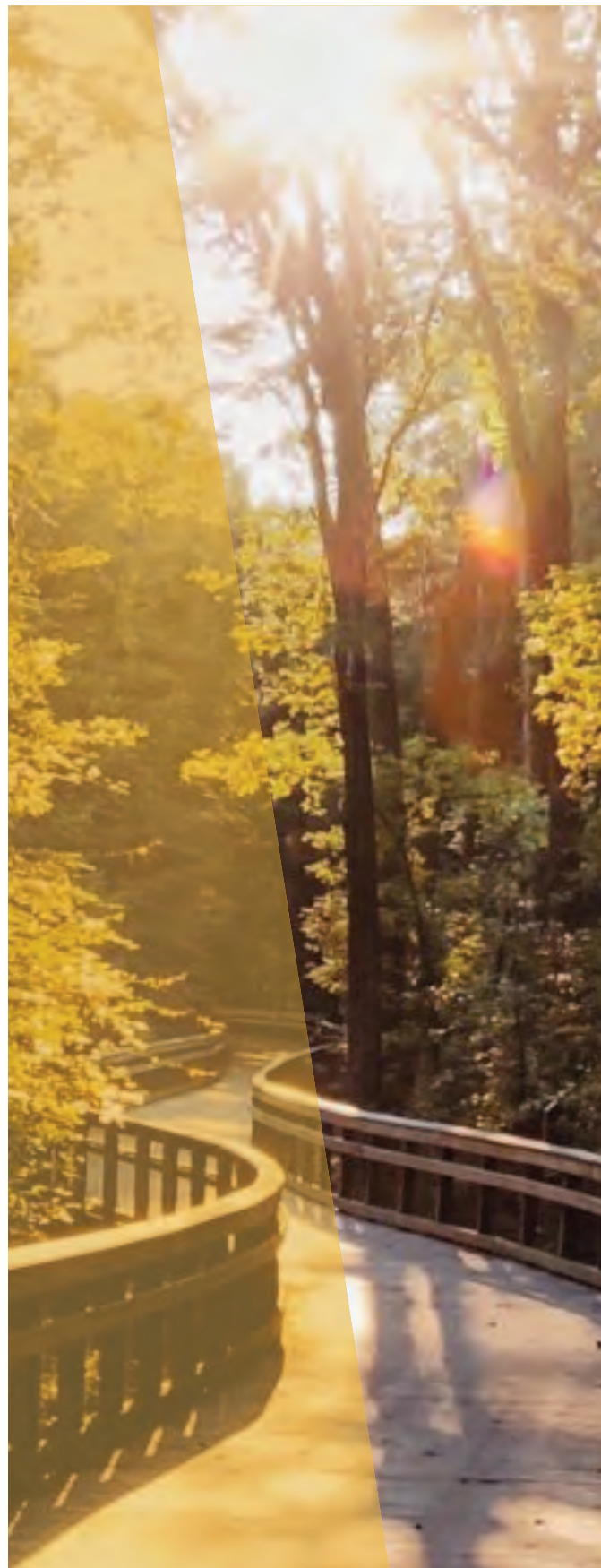
Regional Connection and Community Trails

Amber Fields is adjacent to a future regional trail which is planned through the adjacent parcel east of Akron Ave. This connection, driven by the *Rosemount 2040 Comprehensive Plan* as well as the University's Conceptual Master Plan, would ultimately reach Lebanon Hills to the north and the Vermilion Highlands to the south.

Beyond the regional connections, the plan includes nearly 4.5 miles of local path connections and trails in addition to neighborhood sidewalks. In order to facilitate and encourage exercise and potential 5k events, the park perimeter trail is designed to be a half 5k loop (2.5k per lap). In order to connect pedestrians between the local and regional trails, an underpass across Akron Avenue is suggested. It's envisioned that the main public access for these trails would be provided by way of a parking lot and landing node on the east, adjacent to Akron Avenue. A similar smaller landing node on the west is intended to serve a smaller number of users anticipated coming from the local roads.

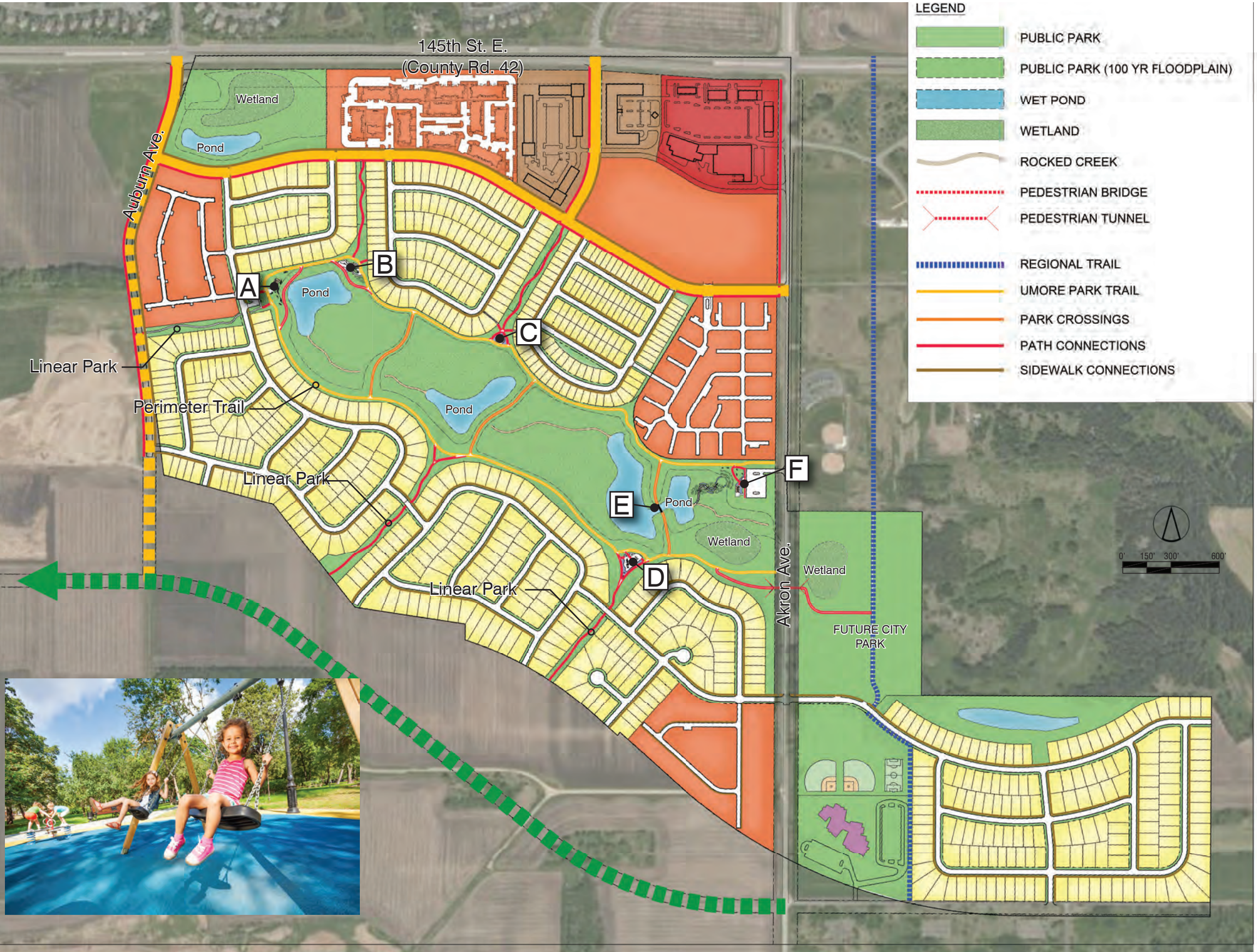
Defining Space With Vegetation

Vegetation and hardscape will be important in defining the pedestrian experience of Amber Fields. Park trails will be set above the 100 year flood level and designed as "green hallways", flanked with 12 feet of tree lined, sodded and irrigated bench on each side. Moving down the side slopes and into the large 100 year and 10 year flood storage areas, native prairie plantings will be used with a specific emphasis on color. Native mixes will be enhanced with additional wild flowers in the 100 year flood zone to achieve this effect. Meandering through the center of flood zones is a creek which will be dry under normal conditions. The dry creek is to be flanked by 15 feet of wild flowers appropriate for the stormwater demands of the area.



Walnut_Creek_Trail_Horizontal_5d11bf23-9b93-4a55-82fe-0d64a82dbc0a. (n.d.). [Photograph]. <https://www.visitraleigh.com>

Amber Fields - Parks, Trails, and Open Space



- Directory**
- A. West Landing Node
 - B. Nature Playground
 - C. Sundial Garden
 - D. School Aged Play
 - E. Pedestrian Bridge
 - F. East Landing Node



All information and depictions shown are artist interpretations and remain subject to change.

PARK AMENITIES

Park Programming: Something For Everyone

To draw users in and around the park area, a large diversity of passive and active park amenities and open spaces are planned. Recreational amenities are generally laid out with sports fields east of Akron (E on map), near existing ballfields to the north, and a variety of landing areas, playgrounds, and passive spaces to the west (A-F on map). Programming has been dispersed within the central park area locating the more active uses closer to parking areas and passive uses further away.

Landing Areas:

Landing areas with parking, map signage and pedestrian amenities such as drinking fountains and bike repair stations are proposed on the east and west ends of the central green corridor (A and F on map). These areas are also good locations for larger gathering spaces such as picnic pavilions and amphitheatres which require food or materials to be brought in.

Playground Areas:

Two unique playgrounds have been located on the site with the goal of attracting different age groups (B and D on map). A nature play area is planned in close proximity to the western landing area, allowing parents with younger children the opportunity to play without walking a large distance. On the east end of the site, a more traditional playground is proposed with a large play structure and swings appealing to school aged children.

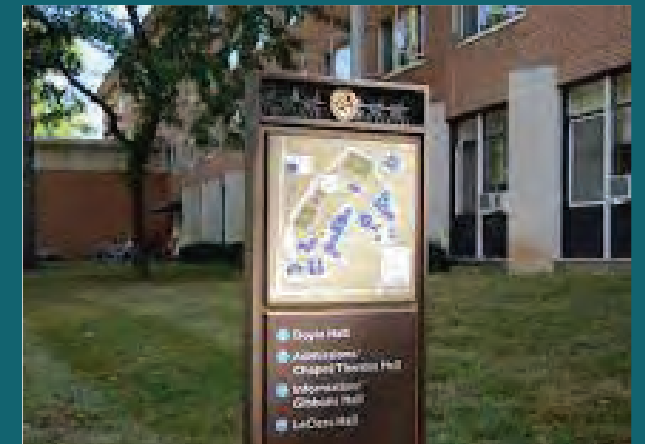
Art Garden and Passive Areas:

The large open spaces within the park will provide great opportunities for passive activities (wildlife viewing, walking and vistas). In addition, special features such as an art garden and a bridge (C and E) will provide additional points of interest.

Design Inspiration:

Various vertical elements such as pavilions, decks and sculptures will be created as part of the park amenities. Additionally, a number of special paths, bridges, gathering spaces, kiosk/map areas, and seating will be included within the parks. Due to the scale of this project, it's intended that there would be significant diversity in the materials and styles. However, a basic aesthetic of the prairie is envisioned. A style emphasizing the horizontal, using simple, clean and elegant forms and materials. The following pages show conceptual site level programs and layouts for each of the areas shown on the map.

CHARACTER EXAMPLES



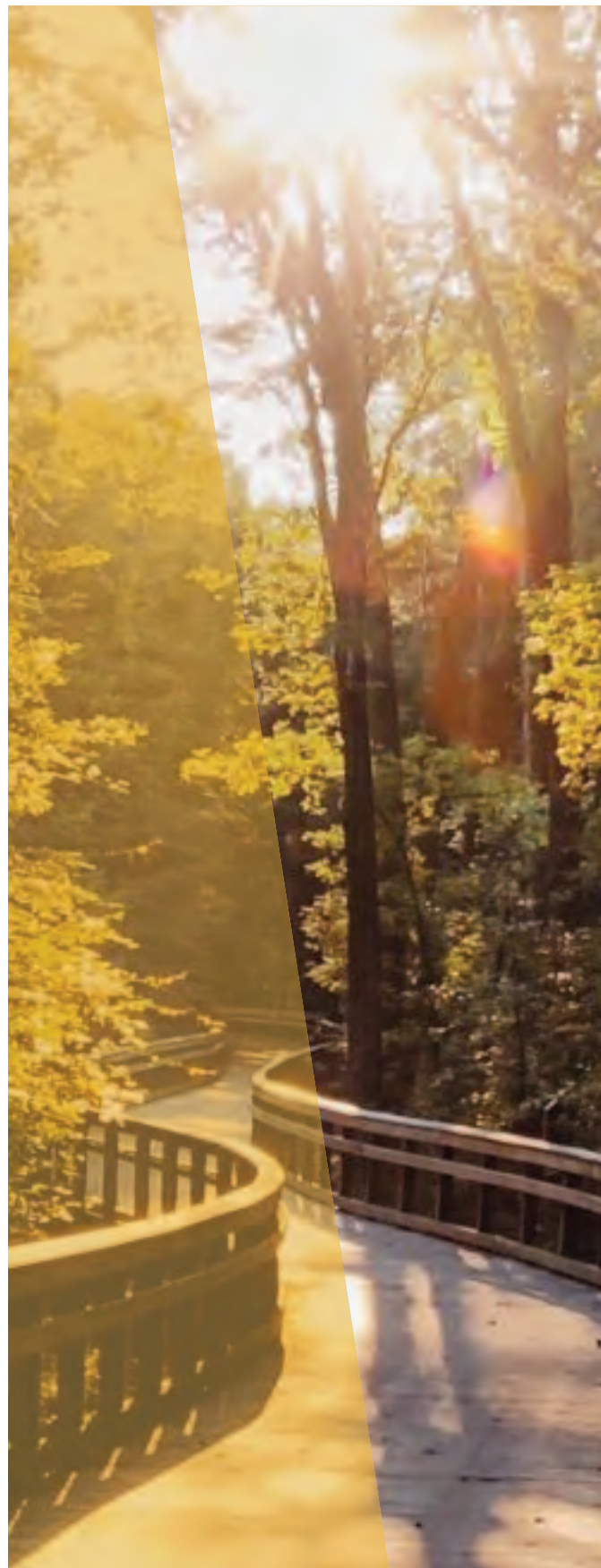
Landing Areas



Playground Areas



Passive Recreation



Walnut_Creek_Trail_Horizontal_5df1bf23-9b93-4a55-821e-0d64a82dbc0a. (n.d.). [Photograph]. <https://www.visitraleigh.com>

All information and depictions shown are artist interpretations and remain subject to change.

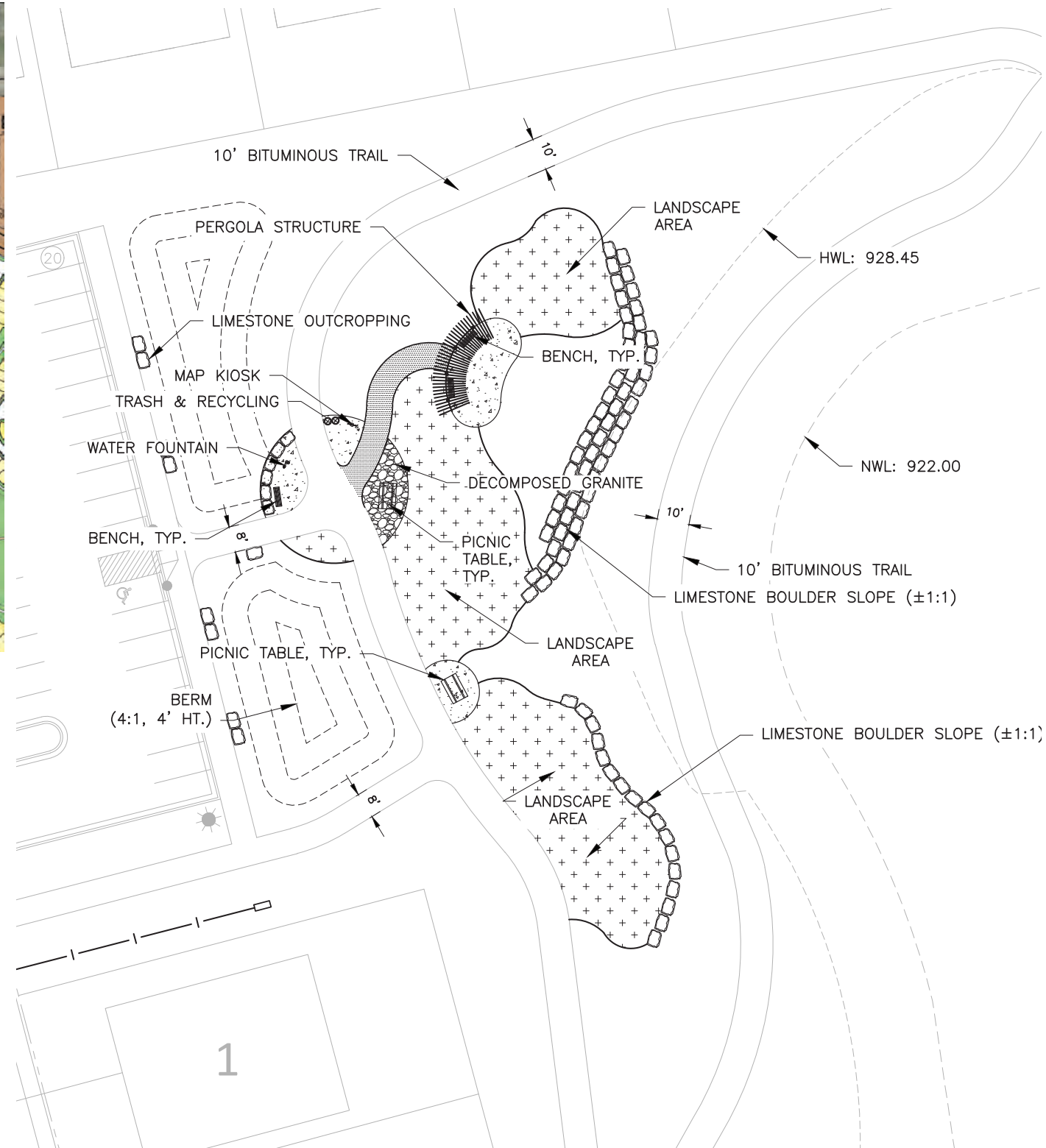
Amber Fields - Parks, Trails, and Open Space



A. WEST LANDING NODE

Program:

- Parking
- Picnic Pavilion and Vista
- Pedestrian Amenities
 - Water Fountain
 - Wayfinding Kiosk
 - Seat Wall/Stone Slab Seats
- Rock Outcroppings
- Native Hillside Plantings



CHARACTER EXAMPLES



NATIVE HILLSIDE PLANTINGS & ROCK OUTCROPPINGS

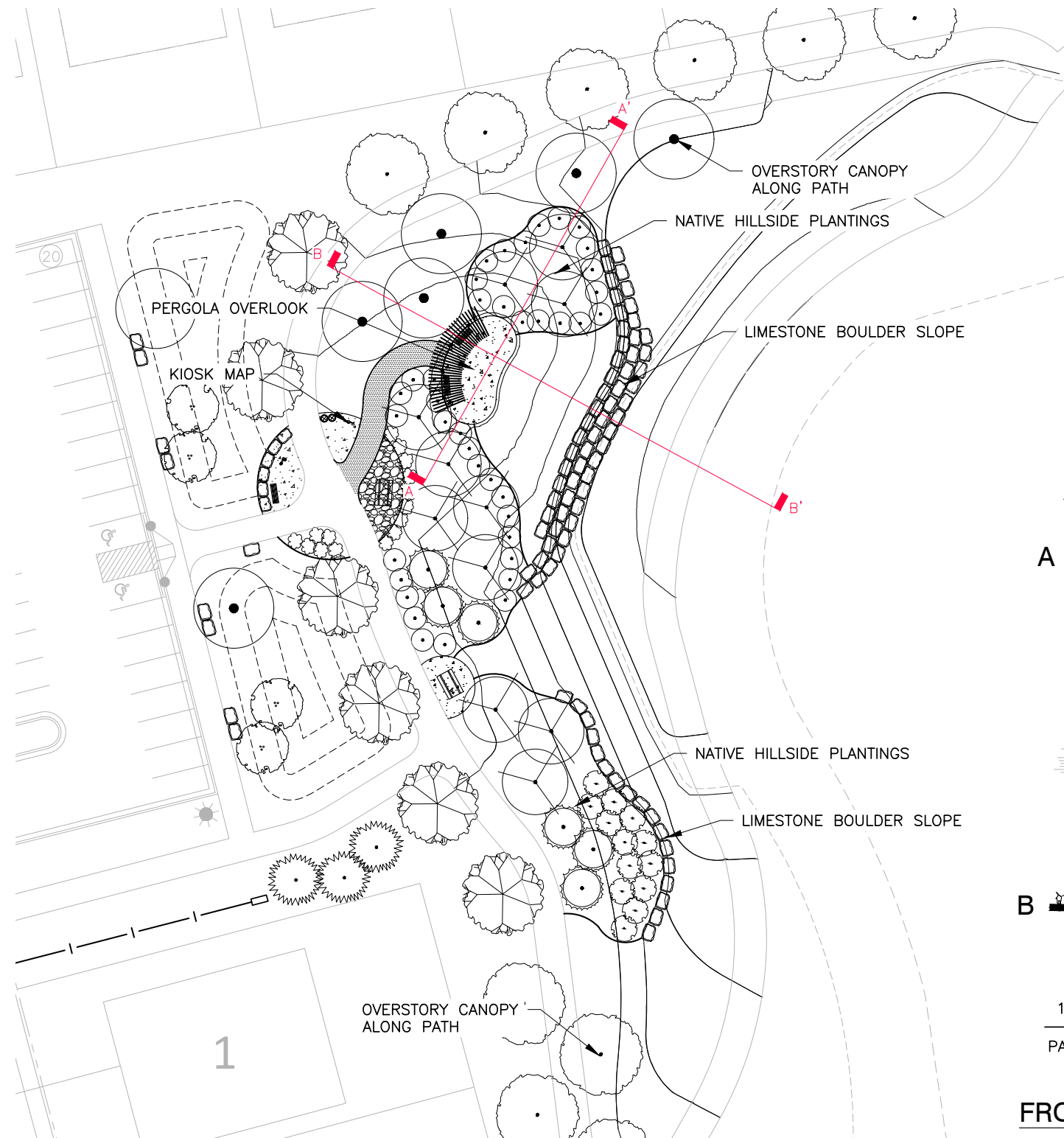


CURVED PERGOLA



LIMESTONE SLOPE

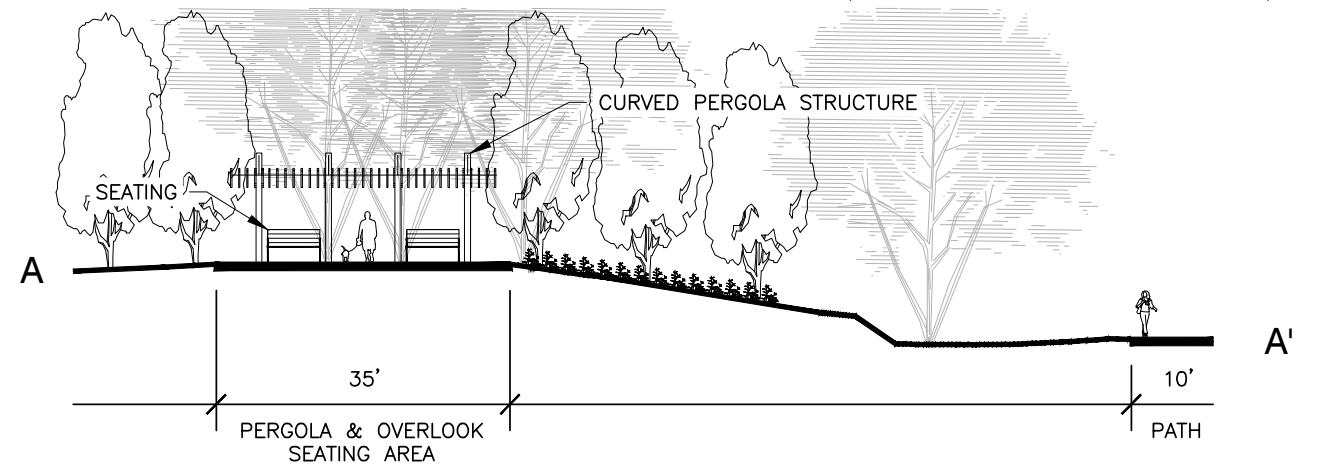
Amber Fields - Parks, Trails, and Open Space



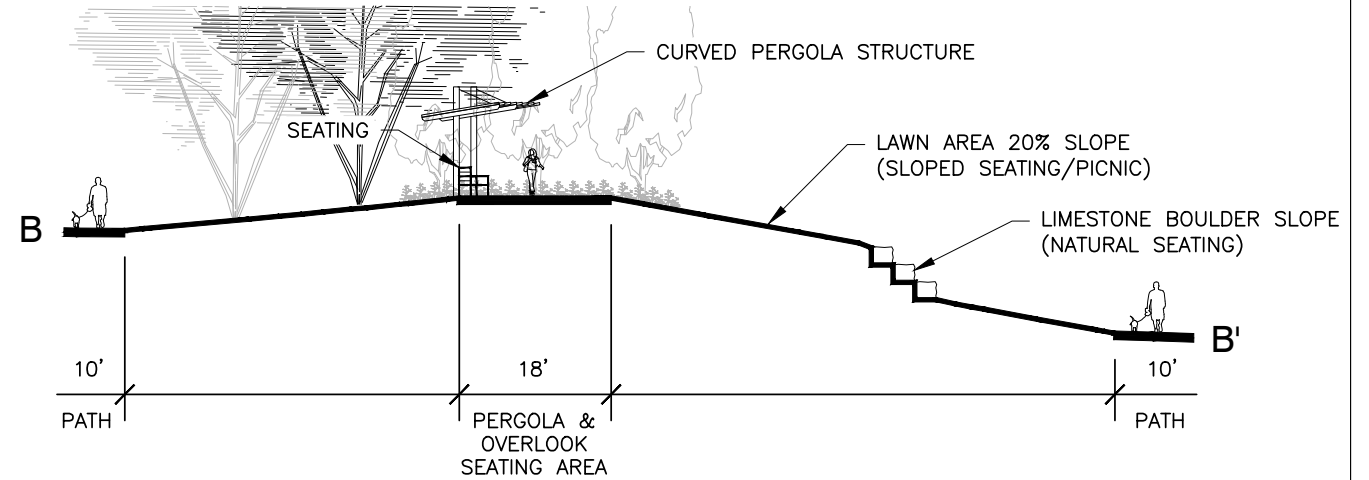
- 4X4 PT WOOD COLUMNS (MATCH PAVILION COLOR)
- HIGH PRESSURE LAMINATE SIGNAGE
- BOLT-ON METAL BASE PLATE (POWDER COAT BLACK)

MAP KIOSK CONCEPTS

- INCLUDE:
 - LARGE MAP: UMORE PARK AT AMBER FIELDS
 - SMALL MAP: REGIONAL PARKS AND TRAILS
 - PARK RULES
 - INTERPRETIVE INFO

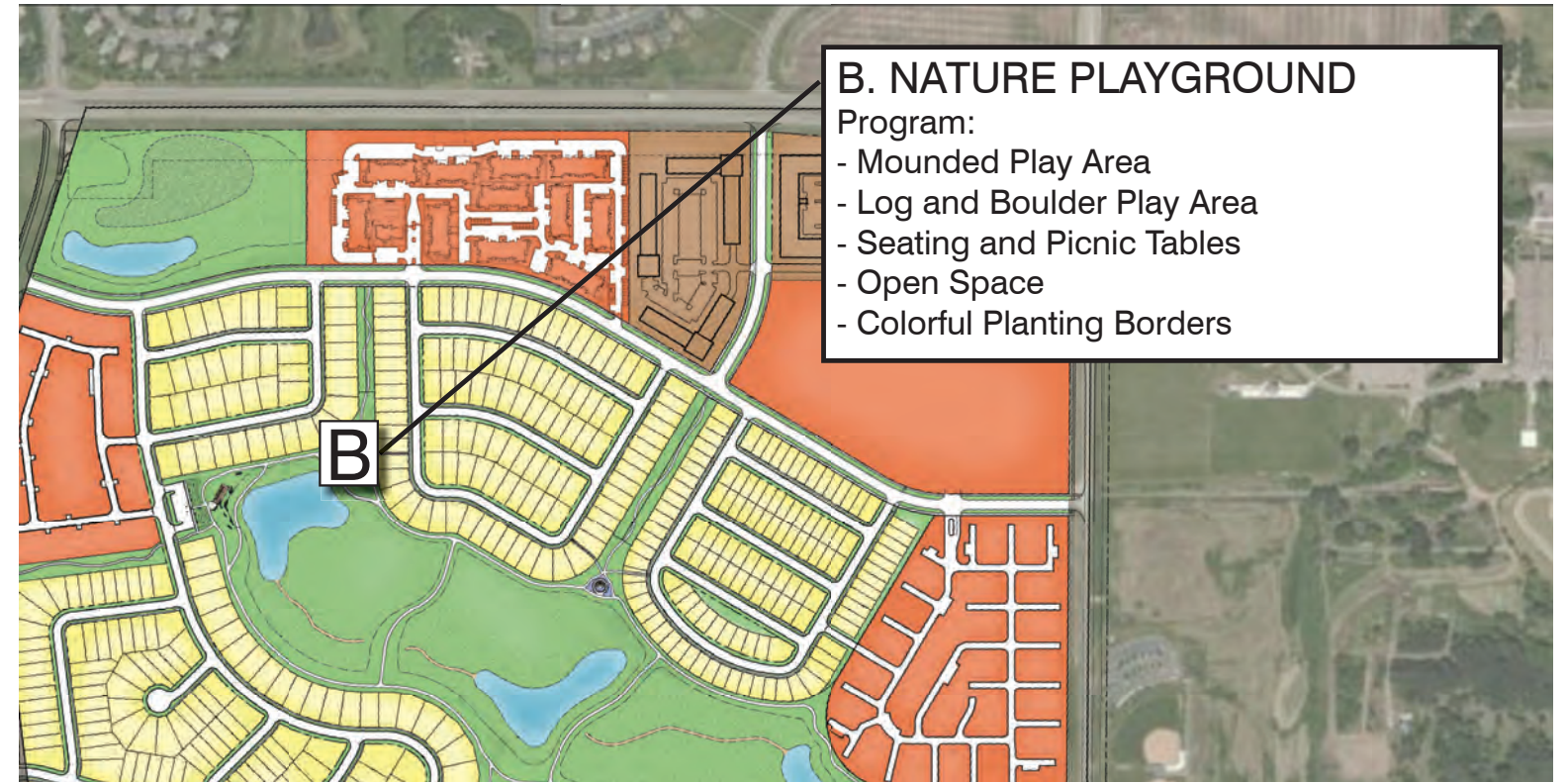
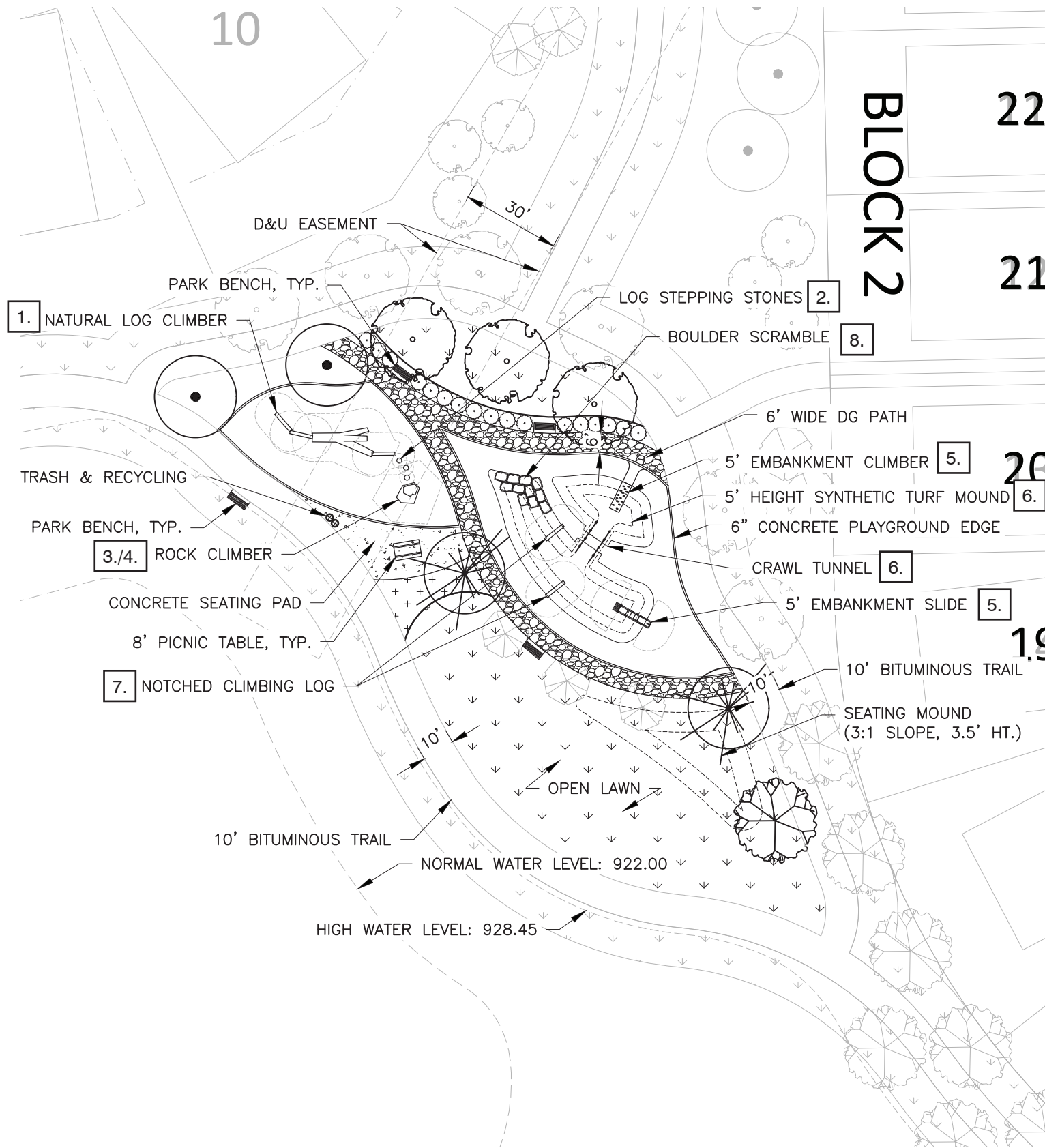


FRONT SECTION/ELEVATION (A-A')



FRONT SECTION/ELEVATION (A-A')

Amber Fields - Parks, Trails, and Open Space



CHARACTER EXAMPLES

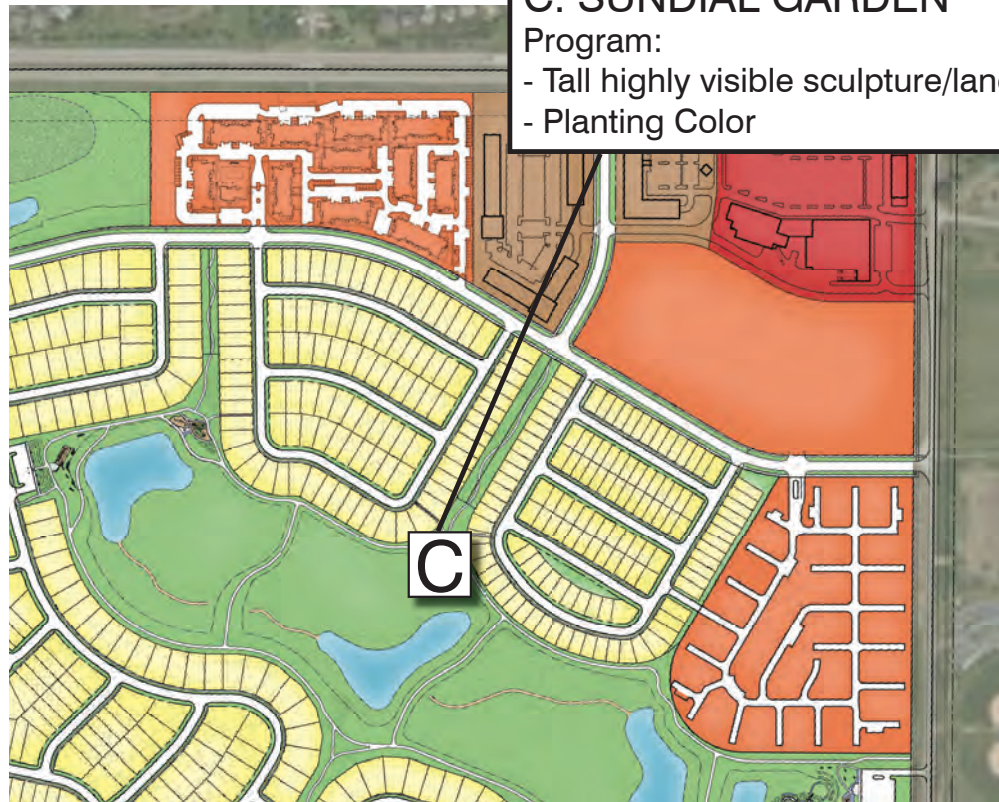


NATURE PLAYGROUND CONCEPT PLAN

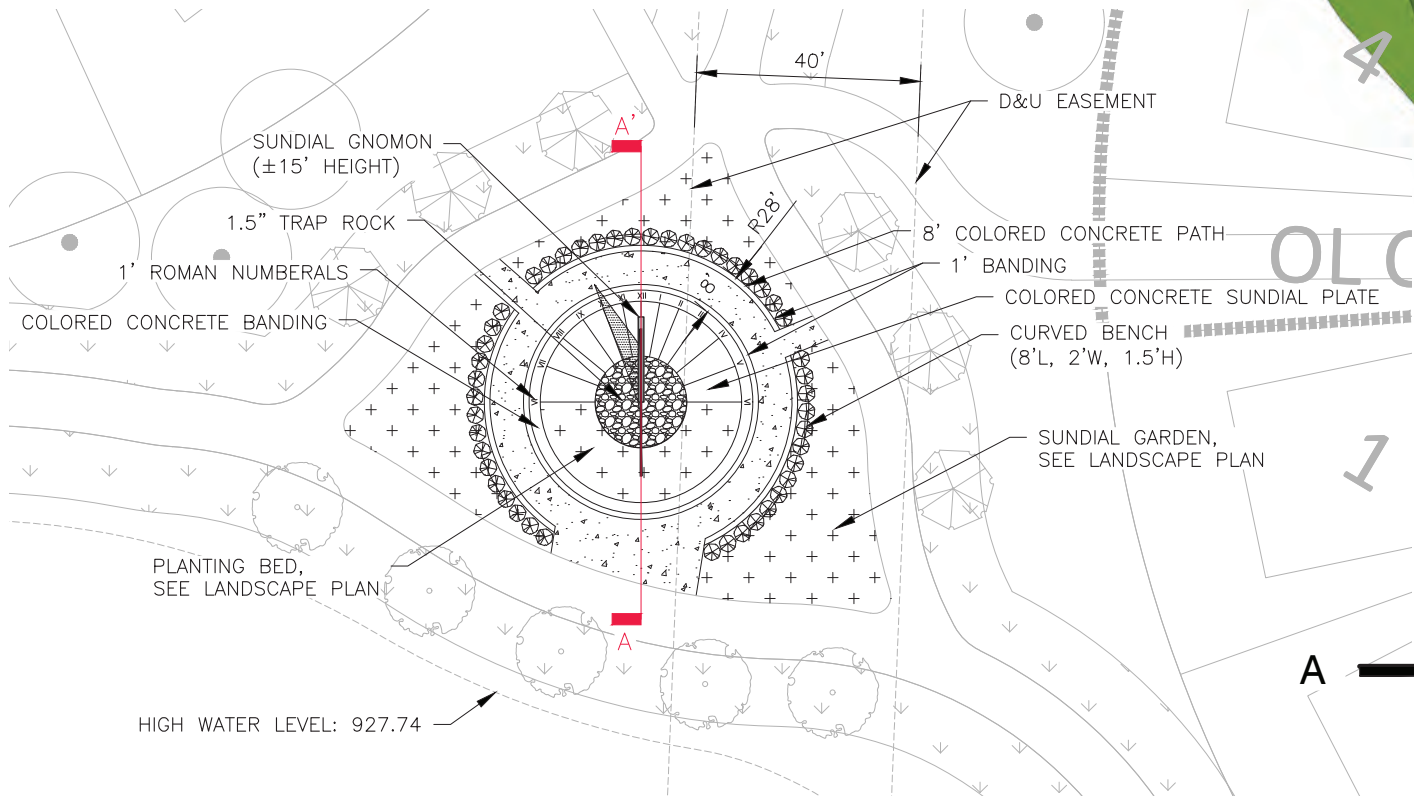
All information and depictions shown are artist interpretations and remain subject to change.

Amber Fields - Parks, Trails, and Open Space

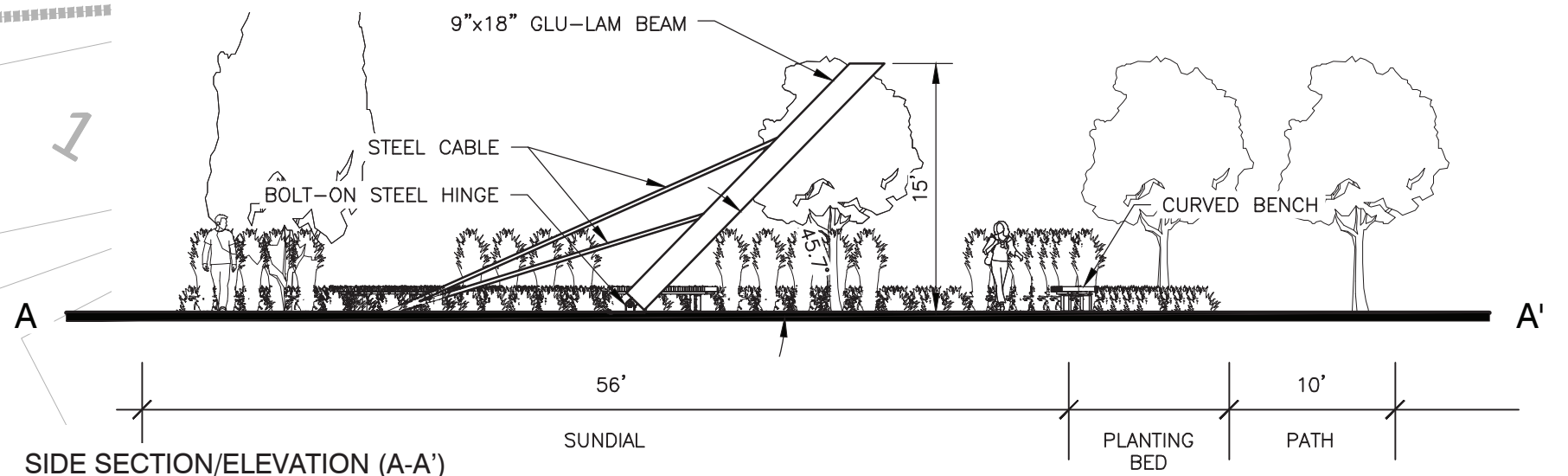
C. SUNDIAL GARDEN
 Program:
 - Tall highly visible sculpture/landmark
 - Planting Color



NATIVE PLANTINGS



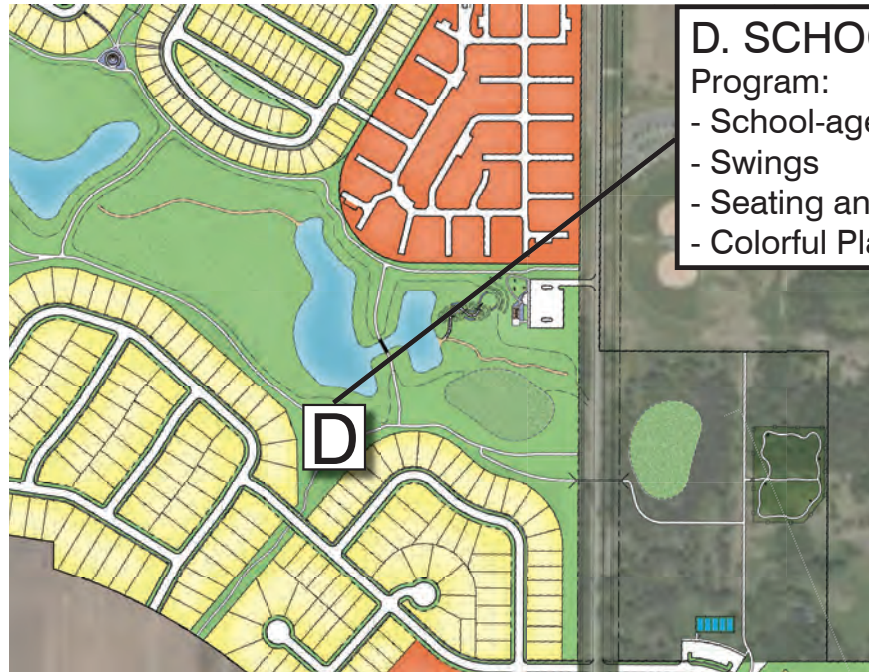
VIEW OF CONCEPTUAL SUNDIAL GARDEN



SUNDIAL GARDEN CONCEPT PLAN

SIDE SECTION/ELEVATION (A-A')

All information and depictions shown are artist interpretations and remain subject to change.



D. SCHOOL AGED PLAY
 Program:
 - School-aged Play Structure
 - Swings
 - Seating and Picnic Tables
 - Colorful Planting Borders

CHARACTER EXAMPLES



1. SCHOOL-AGED PLAY STRUCTURE



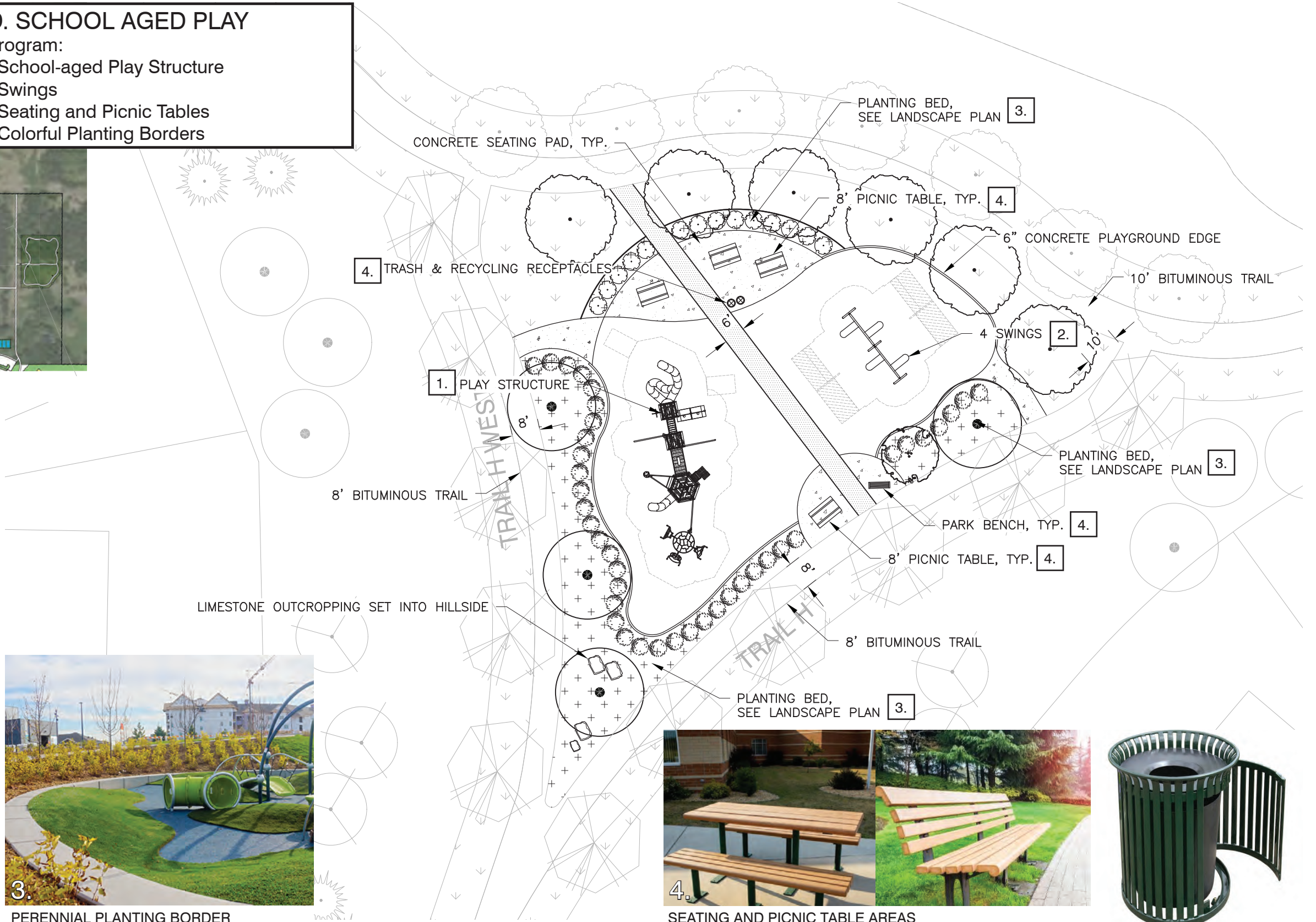
2. SWINGS W/ ADA BAY



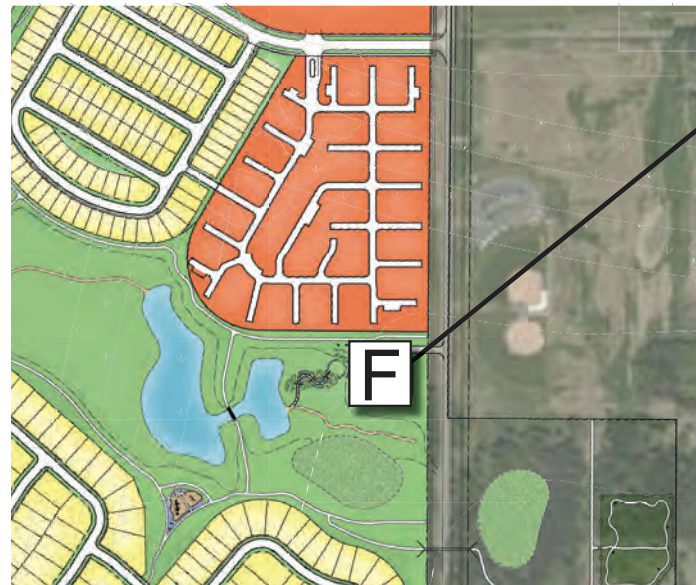
3. PERENNIAL PLANTING BORDER



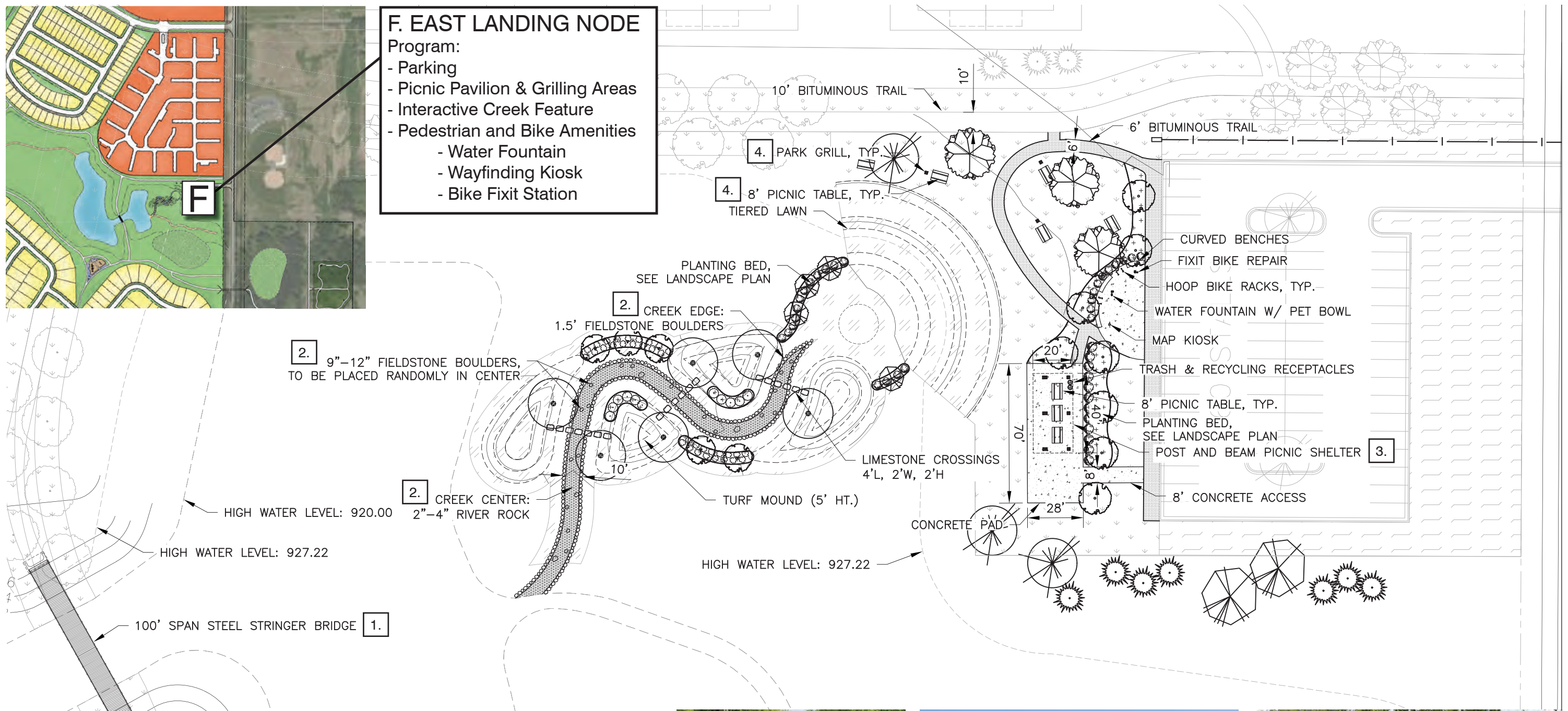
4. SEATING AND PICNIC TABLE AREAS



Amber Fields - Parks, Trails, and Open Space



F. EAST LANDING NODE
Program:
 - Parking
 - Picnic Pavilion & Grilling Areas
 - Interactive Creek Feature
 - Pedestrian and Bike Amenities
 - Water Fountain
 - Wayfinding Kiosk
 - Bike Fixit Station



CHARACTER EXAMPLES



All information and depictions shown are artist interpretations and remain subject to change.

Amber Fields - Parks, Trails, and Open Space

PEDESTRIAN & BIKE AMENITIES

EAST PEDESTRIAN AREA

- CURVED BENCHES
- FIXIT BIKE REPAIR
- HOOP BIKE RACKS, T
- WATER FOUNTAIN W/ PET BOWL
- MAP KIOSK

MAP KIOSK CONCEPTS

- 4X4 PT WOOD COLUMNS (MATCH PAVILION COLOR)
- HIGH PRESSURE LAMINATE SIGNAGE
- BOLT-ON METAL BASE PLATE (POWDER COAT BLACK)

36"
48"

INCLUDE:
- LARGE MAP: UMORE PARK AMENITIES
- SMALL MAP: REGIONAL PARKS AND TRAILS
- PARK RULES
- INTERPRETIVE INFO

CURVED BENCH

WATERFOUNTAIN W/ PET BOWL

FIXIT STATION

HOOP BIKE RACK

STYLIZED CREEK PLANTINGS

TURF MOUNDS

INTERACTIVE CREEK BED

LIMESTONE CROSSINGS

VIEW OF CONCEPTUAL STYLIZED CREEK